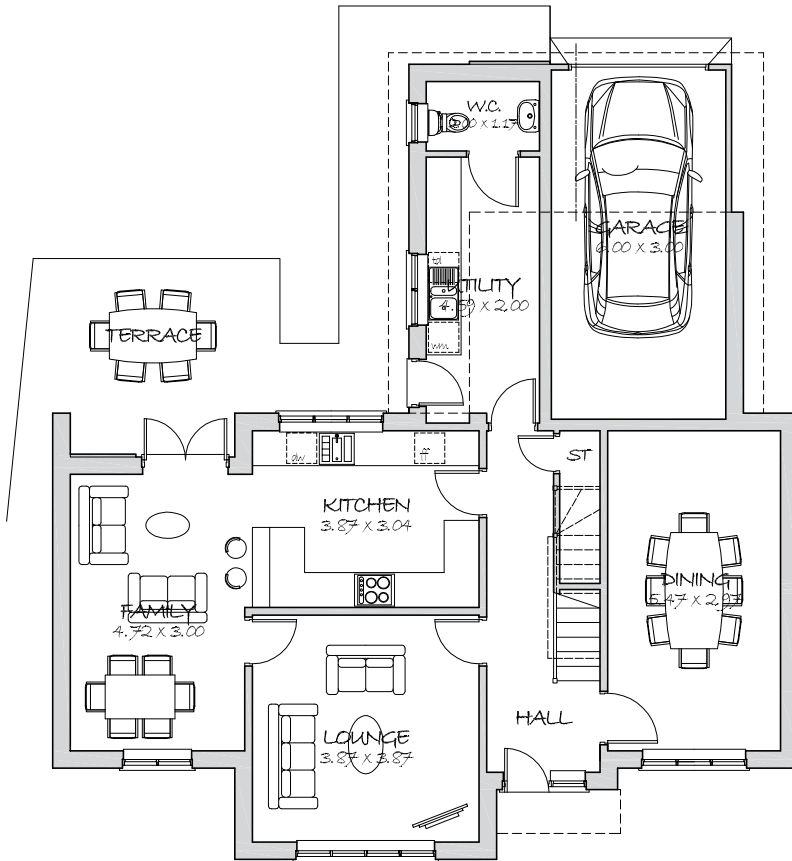


the Cambridge

219 SQ.M. 2355 SQ.FT.
FOUR BEDROOM HOME

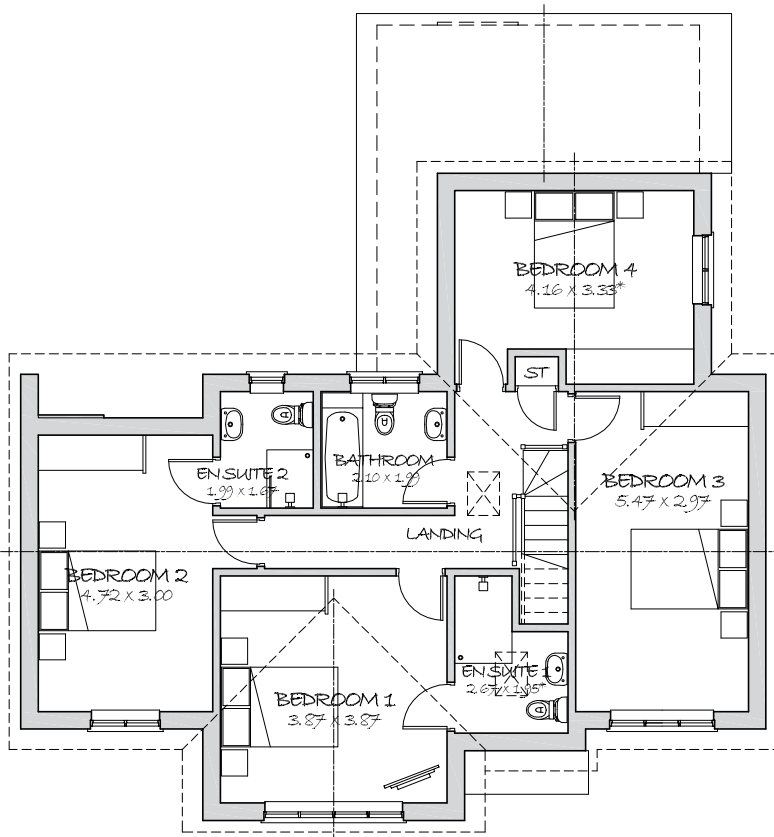


GROUND FLOOR

Lounge	12' 8" x 12' 8"	3.87m x 3.87m
Dining	17' 11" x 9' 9"	5.47m x 2.97m
Kitchen	12' 8" x 10' 0"	3.87m x 3.04m
Family	15' 6" x 9' 10"	4.72m x 3.00m
Utility	15' 1" x 6' 7"	4.59m x 2.00m
W.C.	6' 7" x 3' 10"	2.00m x 1.17m
Garage	19' 8" x 9' 10"	6.00m x 3.00m

Key :

- gas hob & below-worktop oven
- double bowl sink & drainer
- fridge freezer
- dishwasher space
- washing machine space
- tumble dryer space
- * denotes maximum room dimension where applicable



FIRST FLOOR

Bedroom 1	12' 8" x 12' 8"	3.87m x 3.87m
En Suite 1	8' 9" x 6' 5" *	2.67m x 1.95m *
Bedroom 2	15' 6" x 9' 10"	4.72m x 3.00m
En Suite 2	6' 6" x 5' 6"	1.99m x 1.67m
Bedroom 3	17' 11" x 9' 9"	5.47m x 2.97m
Bedroom 4	13' 8" x 10' 11" *	4.16m x 3.33m *
Bathroom	6' 11" x 6' 6"	2.10m x 1.99m

This illustration is an example of the 'Cambridge' house type constructed by Brindle Homes. All dimensions indicated are approximate and furniture layouts shown for illustration only. Detailed plans are available by arranging a meeting with the site manager. Brindle Homes give notice that these property particulars, whilst believed to be accurate, are intended for guideline purposes only. Intending purchasers should not rely on the details as a statement or representation of fact, but should satisfy themselves as to their accuracy or fit for purpose. Consequently, no information displayed herewith constitutes of form any part of any contract.