



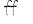
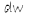
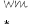
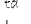
# the Abbey

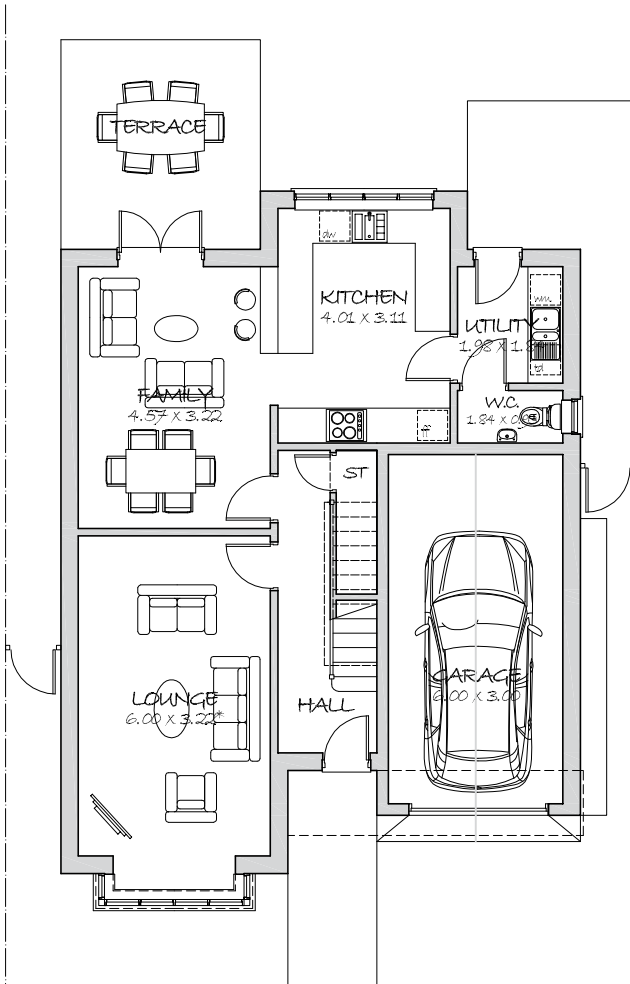
189 SQ.M. 2030 SQ.FT.  
FOUR BEDROOM HOME

## GROUND FLOOR

Lounge	19' 8" x 10' 7" *	6.00m x 3.22m *
Family	15' 0" x 10' 7"	4.57m x 3.22m
Kitchen	13' 2" x 10' 2"	4.01m x 3.11m
Utility	6' 6" x 6' 0"	1.98m x 1.84m
W.C.	6' 0" x 3' 1"	1.84m x 0.93m
Garage	19' 8" x 9' 10"	6.00m x 3.00m

Key :

-  gas hob & below-worktop oven
-  double bowl sink & drainer
-  fridge freezer
-  dishwasher space
-  washing machine space
-  tumble dryer space
- \* denotes maximum room dimension where applicable



## FIRST FLOOR

Bedroom 1	16' 1" x 12' 11" *	4.90m x 3.94m *
En Suite 1	6' 7" x 5' 6"	2.01m x 1.68m
Bedroom 2	13' 3" x 11' 1"	4.04m x 3.37m
Bedroom 3	13' 9" x 13' 8" *	4.18m x 4.17m *
Bedroom 4	13' 10" x 13' 5" *	4.21m x 4.10m *
Bathroom	8' 3" x 7' 3"	2.52m x 2.22m

This illustration is an example of the 'Abbey' house type constructed by Brindle Homes. All dimensions indicated are approximate and furniture layouts shown for illustration only. Detailed plans are available by arranging a meeting with the site manager. Brindle Homes give notice that these property particulars, whilst believed to be accurate, are intended for guideline purposes only. Intending purchasers should not rely on the details as a statement or representation of fact, but should satisfy themselves as to their accuracy and fit for purpose. Consequently, no information displayed herewith constitutes of form any part of any contract.

