



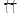
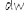
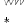
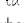
the Windsor

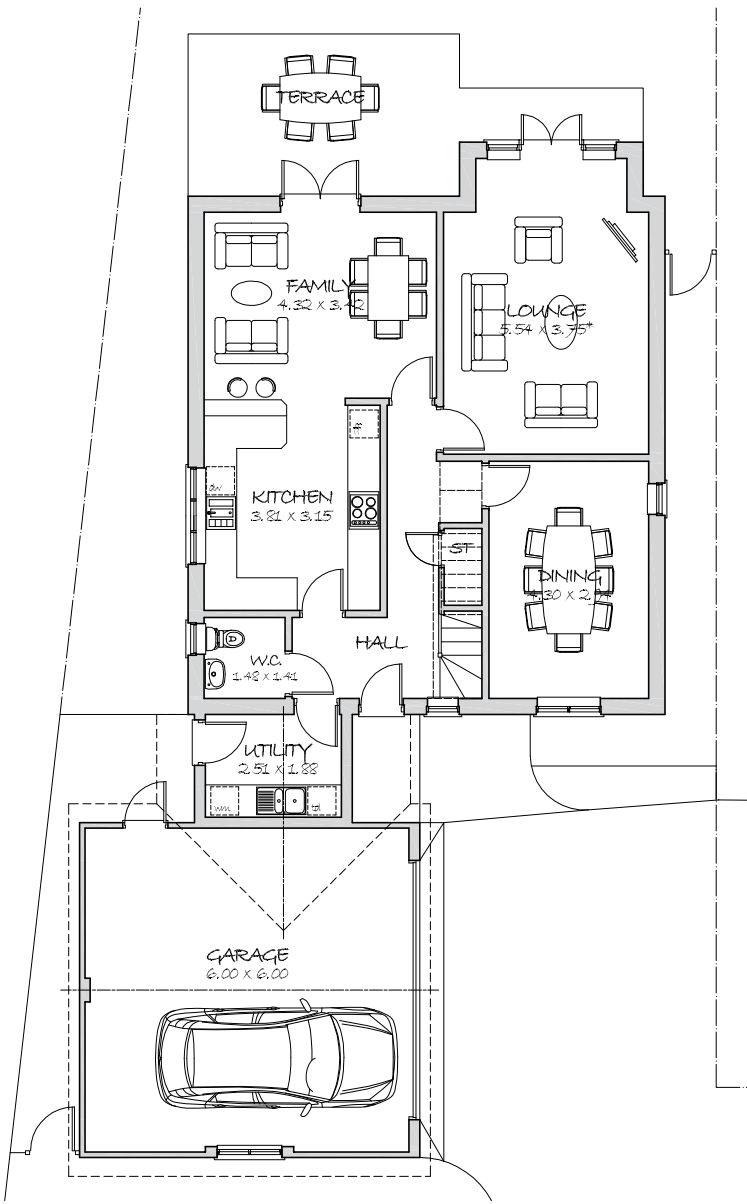
221 SQ.M. 2381 SQ.FT.
FOUR BEDROOM HOME

GROUND FLOOR

Lounge	18' 2" x 12' 4" *	5.54m x 3.75m *
Dining	14' 1" x 9' 8"	4.30m x 2.94m
Kitchen	12' 6" x 10' 4"	3.81m x 3.15m
Family	14' 2" x 11' 3"	4.32m x 3.42m
Utility	8' 3" x 6' 2"	2.51m x 1.88m
W.C.	4' 10" x 4' 8"	1.48m x 1.41m
Garage	19' 8" x 19' 8"	6.00m x 6.00m

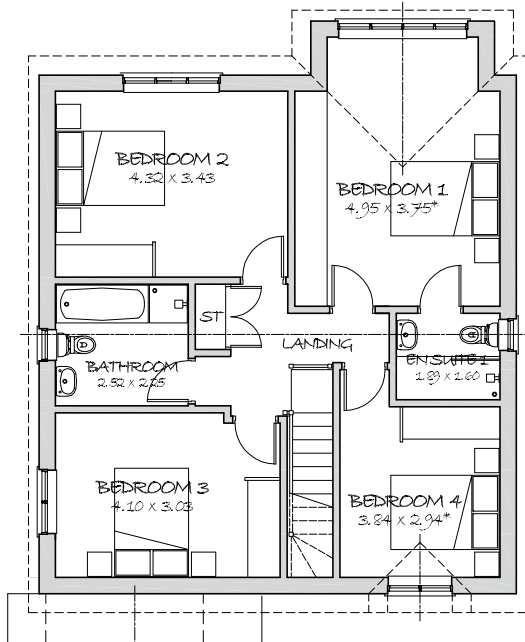
Key :

-  gas hob & below-worktop oven
-  double bowl sink & drainer
-  fridge freezer
-  dishwasher space
-  washing machine space
-  tumble dryer space
- * denotes maximum room dimension where applicable



FIRST FLOOR

Bedroom 1	16' 3" x 12' 4" *	4.95m x 3.75m *
En Suite 1	6' 2" x 5' 3"	1.89m x 1.60m
Bedroom 2	14' 2" x 11' 3"	4.32m x 3.43m
Bedroom 3	13' 5" x 9' 11"	4.10m x 3.03m
Bedroom 4	12' 7" x 9' 8" *	3.84m x 2.94m *
Bathroom	8' 3" x 7' 5"	2.52m x 2.25m



This illustration is an example of the 'Windsor' house type constructed by Brindle Homes. All dimensions indicated are approximate and furniture layouts shown for illustration only. Detailed plans are available by arranging a meeting with the site manager. Brindle Homes give notice that these property particulars, whilst believed to be accurate, are intended for guideline purposes only. Intending purchasers should not rely on the details as a statement or representation of fact, but should satisfy themselves as to their accuracy or fit for purpose. Consequently, no information displayed herewith constitutes of form any part of any contract.