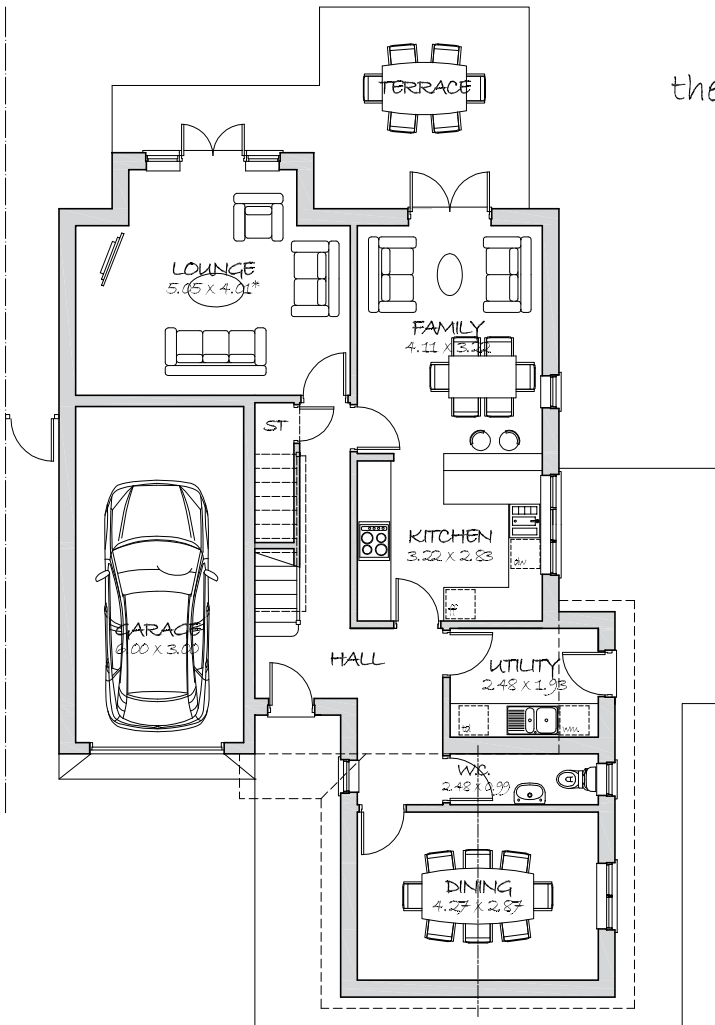


the Westminster

206 SQ.M. 2217 SQ.FT.
FOUR BEDROOM HOME

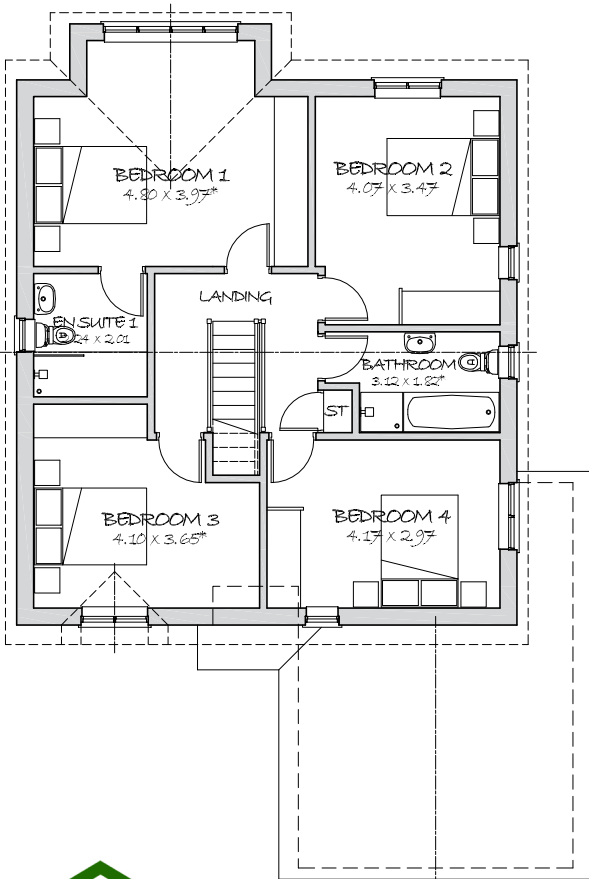


GROUND FLOOR

Lounge	16' 7" x 13' 2" *	5.05m x 4.01m *
Dining	14' 0" x 9' 5"	4.27m x 2.87m
Kitchen	10' 7" x 9' 3"	3.22m x 2.83m
Family	13' 6" x 10' 7"	4.11m x 3.22m
Utility	8' 2" x 6' 4"	2.48m x 1.93m
W.C.	8' 2" x 3' 3"	2.48m x 0.99m
Garage	19' 8" x 9' 10"	6.00m x 3.00m

Key :

- gas hob & below-worktop oven
- fridge freezer
- washing machine space
- double bowl sink & drainer
- dishwasher space
- tumble dryer space
- * denotes maximum room dimension where applicable



FIRST FLOOR

Bedroom 1	15' 9" x 13' 0" *	4.80m x 3.97m *
En Suite 1	7' 4" x 6' 7"	2.24m x 2.01m
Bedroom 2	13' 4" x 11' 5"	4.07m x 3.47m
Bedroom 3	13' 5" x 12' 0" *	4.10m x 3.65m *
Bedroom 4	13' 8" x 9' 9"	4.17m x 2.97m
Bathroom	10' 3" x 6' 0" *	3.12m x 1.82m *

This illustration is an example of the 'Westminster' house type constructed by Brindle Homes. All dimensions indicated are approximate and furniture layouts shown for illustration only. Detailed plans are available by arranging a meeting with the site manager. Brindle Homes give notice that these property particulars, whilst believed to be accurate, are intended for guideline purposes only. Intending purchasers should not rely on the details as a statement or representation of fact, but should satisfy themselves as to their accuracy or fit for purpose. Consequently, no information displayed herewith constitutes of form any part of any contract.